

# Ultracell®

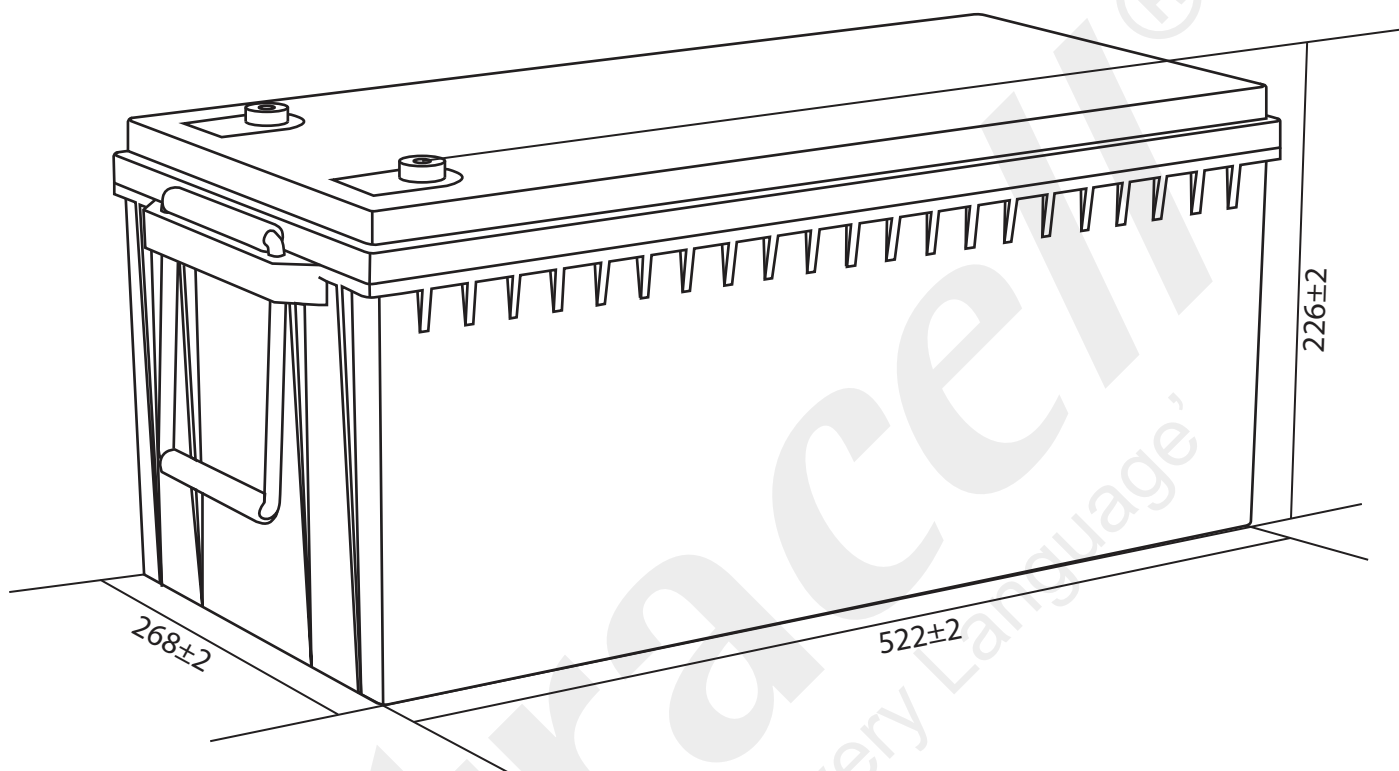
'Quality in Every Language'

UC250-12E

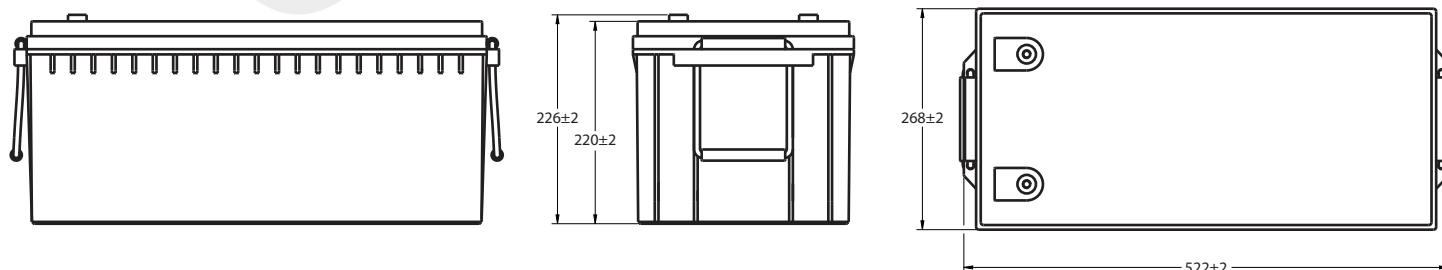
12V 250Ah (C<sub>10</sub>)

12V 288Ah (C<sub>100</sub>)

Deep Cycle Series



## Technical Dimensions (mm)



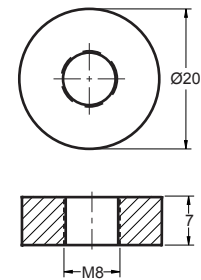


Image



Terminal Dimensions (mm)

Standard Terminal: F11



Technical Specification

<b>Output</b>	Nominal Voltage	12V
	Nominal Capacity (10HR)	250Ah
<b>Terminal Type</b>	Standard Terminal	F11
<b>Container Material</b>	Standard Option	ABS
	Flame Retardant Option (FR)	ABS (UL94:VO)
<b>Rated Capacity</b>	(20HR 1.80V/cell, 25°C)	262.0 Ah/13.1A
	(10HR 1.80V/cell, 25°C)	250.0 Ah/25.0A
	(5HR 1.75V/cell, 25°C)	227.5 Ah/45.5A
	(3HR 1.75V/cell, 25°C)	207.3 Ah/69.1A
	(1HR 1.60V/cell, 25°C)	159.4 Ah/159.4A
<b>Max Discharge Current</b>	2500A (5s)	
<b>Internal Resistance</b>	Approx 2.5mΩ	
<b>Discharge Characteristics</b>	Operating Temp Range	Discharge: -15 ~ 50°C Charge: 0 ~ 40°C Storage: -15 ~ 40°C
	Nominal Operating Temp Range	25 ± 3°C
	Cycle Use	Initial Charging Current less than 75A. Voltage 14.4V ~ 15.0V @ 25°C Temp. Coefficient -30mV/°C
	Standby Use	No limit on initial charging current. Voltage 13.5V ~ 13.8V @ 25°C Temp. Coefficient -20mV/°C
	Capacity affected by Temperature	40°C 103% 25°C 100% 0°C 86%
<b>Design Floating Life at 20°C</b>	8 Years	

Self Discharge

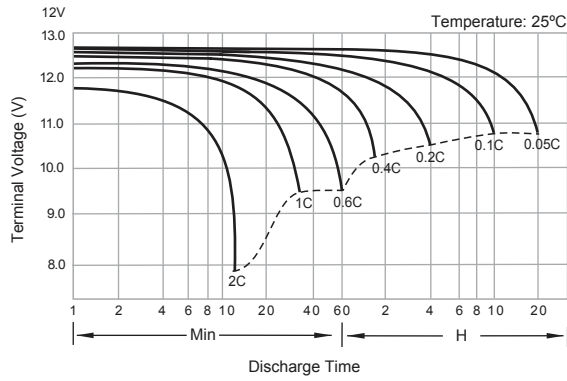
Ultracell® UC batteries may be stored for up to 6 months at 25°C and then a refresh charge is required. For higher temperatures the time intervals will be shorter.

Constant Current Discharge / Constant Power Discharge At 25°C (Amperes & Watts/Cell)

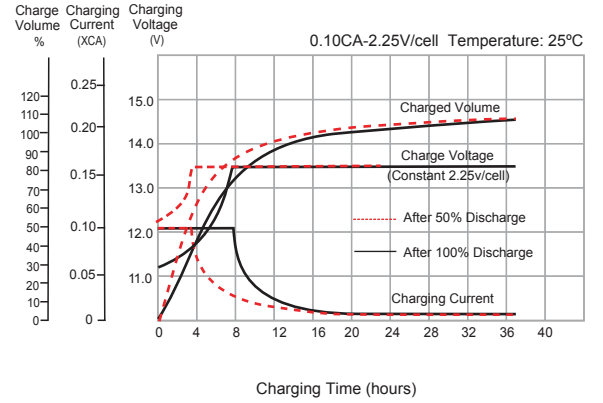
A = Amperes W = Watts

F.V/TIME	10 min	15 min	20 min	30 min	45 min	60 min	90 hours	2 hours	3 hours	4 hours	5 hours	6 hours	8 hours	10 hours	20 hours
A															
W															
1.85V/cell	362.5 668.0	320.7 607.2	252.2 479.7	225.5 430.9	164.9 317.0	139.7 270.1	101.2 196.3	85.1 165.5	62.4 122.0	49.0 96.1	42.5 83.7	37.5 74.0	28.8 57.2	23.9 47.5	12.7 25.2
1.80V/cell	411.4 747.2	363.4 679.2	285.1 536.5	245.5 465.4	174.7 333.7	144.7 278.3	104.7 202.0	87.9 170.1	67.8 131.8	52.3 102.2	44.7 87.7	40.3 79.2	30.3 60.0	25.0 49.6	13.1 26.1
1.75V/cell	446.2 797.5	393.4 724.9	307.8 572.6	250.5 471.3	181.0 343.7	151.8 290.7	110.0 211.4	92.5 178.3	69.1 134.0	53.3 103.7	45.5 88.9	40.6 79.6	30.5 60.1	25.3 50.1	13.3 26.3
1.70V/cell	475.7 838.4	417.8 762.0	326.4 602.0	255.5 476.7	184.6 348.1	154.8 294.9	112.2 214.6	94.4 181.2	70.4 136.1	54.2 105.2	46.3 90.1	40.8 79.9	30.9 61.0	25.5 50.5	13.4 26.6
1.67V/cell	490.8 852.0	430.0 774.4	335.3 611.8	259.3 480.1	187.3 351.3	157.1 297.6	113.9 216.7	95.7 183.0	71.1 136.8	55.0 106.4	47.2 91.7	41.0 80.0	31.4 61.7	25.8 51.1	13.6 26.9
1.60V/cell	507.6 863.9	443.4 785.3	343.9 620.4	263.0 482.1	190.1 353.0	159.4 299.8	115.5 218.4	97.1 184.5	71.7 137.3	55.7 107.2	47.9 92.6	41.3 80.3	31.8 62.4	26.1 51.6	13.7 27.1

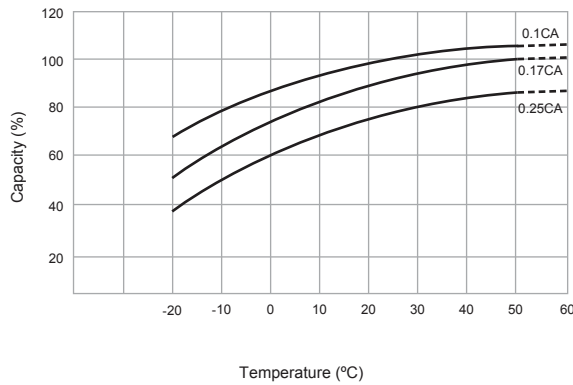
## Discharge Characteristics



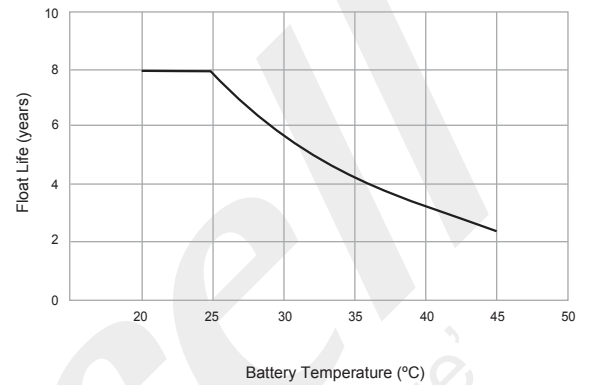
## Float Charging Characteristics



## Temperature Effects in Relation to Battery Capacity



## Effects of Temperature on Long Term Float Life



**UC250-12E**  
 12V 250Ah (C<sub>10</sub>)  
 12V 288Ah (C<sub>100</sub>)  
 Deep Cycle Series

